

**0800
132767**
www.farmquip.co

FARMQUIP

ANIMAL MANAGEMENT SOLUTIONS

100%
New Zealand
owned and
operated



**ORDER A STOCKMAN CATTLE YARD BEFORE 30TH SEPT. & RECEIVE
A BBQ/GRILL & PORTABLE 30L FRIDGE!***

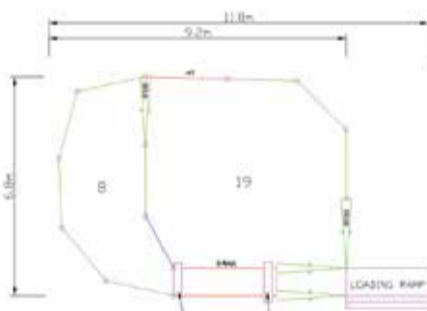


VALUED AT
\$280.00
RRP



VALUED AT
\$349.00
RRP

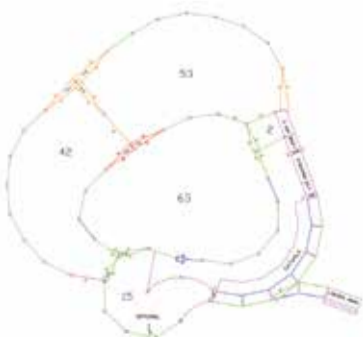
GET READY FOR SUMMER WITH FARMQUIP



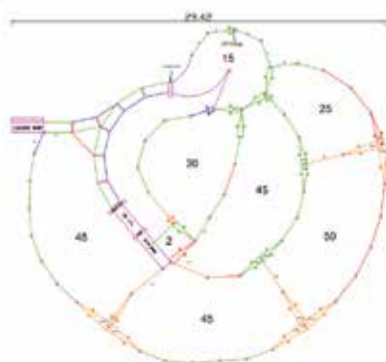
27 Head Plan



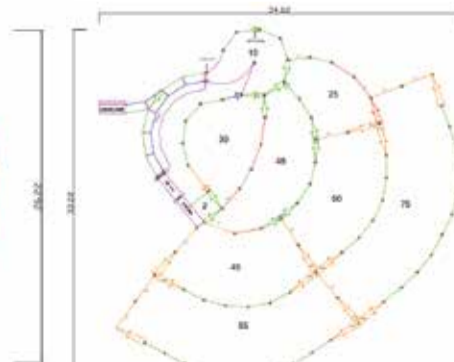
100 Head Plan



160 Head Plan



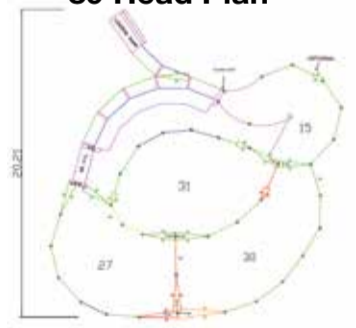
260 Head Plan



350 Head Plan



89 Head Plan



102 Head Plan



500 Head Plan

**MORE STEEL • MORE STRENGTH
MORE SPACE PER ANIMAL
MORE DESIGNS**

Not all cattle yards are the same. Stockman cattle yards are designed to give the farmer the best quality product combined with the best working design.

CALL US FOR A FREE NO OBLIGATION QUOTE.

0800 132767

www.farmquip.co

*Promotional offers valid until 30th September 2021. Applicable on orders over \$25,000.00 & deposit to be paid in September. Not in conjunction with any other promotion. All prices exclude freight unless stated otherwise. BBQ & fridge supplied once full payment has been made.

CATTLE MANAGEMENT

Farmhand Vetless Crush

- Economical crush for weighing and handling
- Farmhand walkthrough headbail
- 50 x 50
- One piece gates on both sides
- Hot dip galvanised
- Heavy duty steel floor
- Single sliding entry door



\$5,995.00
+GST

Optional offside draft handle \$495.00 + GST

Stockmaster Vet Crush

- Quality crush for weighing and handling
- Stockmaster walkthrough headbail
- 75 x 50 base frame
- Split gates on both sides
- Hot dip galvanised
- Heavy duty steel floor
- Single sliding entry door
- Vet access gates
- **Made in New Zealand**



\$9,895.00
+GST

Vetless option \$8495.00+ GST.

Optional offside draft handle \$495.00+ GST.

Stockman Vetless Crush

- Designed for medium to large farms and herds
- Stockman heavy duty headbail
- Hot dipped galvanised
- Extra heavy duty 75 x 50 base frame
- Quiet locking system
- Slam latches on both gates
- Heavy duty steel floor
- Split gates on both sides
- VL5S model
- Double sided parallel squeeze
- **Made in New Zealand**



CALL US
FOR A
QUOTE

StockBoss Vet Crush

- Double Sided Squeeze

- Designed for medium to large farms and bull breeders
- StockBoss heavy duty headbail
- Hot-dipped galvanised
- Extra heavy duty 75 x 50 base frame
- Three piece gates both sides
- Quiet locking system
- Slam latches on both gates
- Rubber floor
- Includes rear handle for headbail operation
- Vet access
- Double sided parallel squeeze
- **Made in New Zealand**



CALL US
FOR A
QUOTE



FARMING IS EASIER WITH FARMQUIP

Stockman Headbail



\$3,595.00
+GST PLUS FREIGHT

Stockmaster Headbail



\$2,895.00
+GST PLUS FREIGHT

Farmhand Walkthrough Headbail



\$1,595.00
+GST PLUS FREIGHT

Farmhand Swingbail



\$995.00
+GST PLUS FREIGHT

Sliding Yard Gate

- Including mounting brackets



\$959.00
+GST PLUS FREIGHT

Anti Backing Ratchets



\$509.00
+GST PLUS FREIGHT

Cattle Yard Gates

- Height 1690mm 7 rail
- 70 x 41mm cattle rail
- Standard sizes only



Priced from
\$259.00
+GST PLUS FREIGHT

Sizes 750,1800,2100,2500,
2700,3100 mm wide.

FRP Catwalk grating



\$369.00 Per sheet
+GST PLUS FREIGHT

HAY FEEDERS

Farmhand Round Hay Feeder

- Large bale, 2m diameter
- 15 head positions



\$ 595.00
+GST PLUS FREIGHT

AVAILABLE
AT
FARMLANDS
NATIONWIDE

Farmhand Heavy Duty Round Feeder

- Large bale, 2m diameter
- 1200mm high
- 9 head positions



\$ 695.00
+GST PLUS FREIGHT

Farmhand Lifestyler Hay Feeder

- Hangs on railed fence or gate
- 467 H x 454 W x 270 D



\$ 79.00
+GST PLUS FREIGHT

Hanging Hay Feeder

- With flip top lid
- Tray for catching feed
- Hangs on railed fence or gate
- 620 H x 580 W x 350 D



\$ 189.00
+GST PLUS FREIGHT

Large Round Bale Cradle Feeder

- 2250 W x 1780 L x 1200 H
- Drop down sides for calves



\$ 1,195.00
+GST PLUS FREIGHT

Sheep/Calf Small Bale Cradle Feeder

- 1650 L x 1440 W



\$ 695.00
+GST PLUS FREIGHT

WHILE
STOCKS
LAST

Large Square Bale Cradle Feeder

- 2900L x 1500W x 1080 H



\$ 895.00
+GST PLUS FREIGHT

Rectangular Hay Bale Feeder

- Fits 2 large bales



\$ 995.00
+GST PLUS FREIGHT

FARMING IS EASIER WITH FARMQUIP



Weight gain
at the touch
of a finger.



Touch Screen Weigh Scales and Readers

Simple to operate touch screen weigh scales and EID Readers. Talk to your local Territory Manager for weighing and EID combos on special.

TW-1 Weigh Scale



TW-3 Weigh Scale



TWR-1 Weigh Scale & Reader



TWR-5 Weigh Scale & Reader

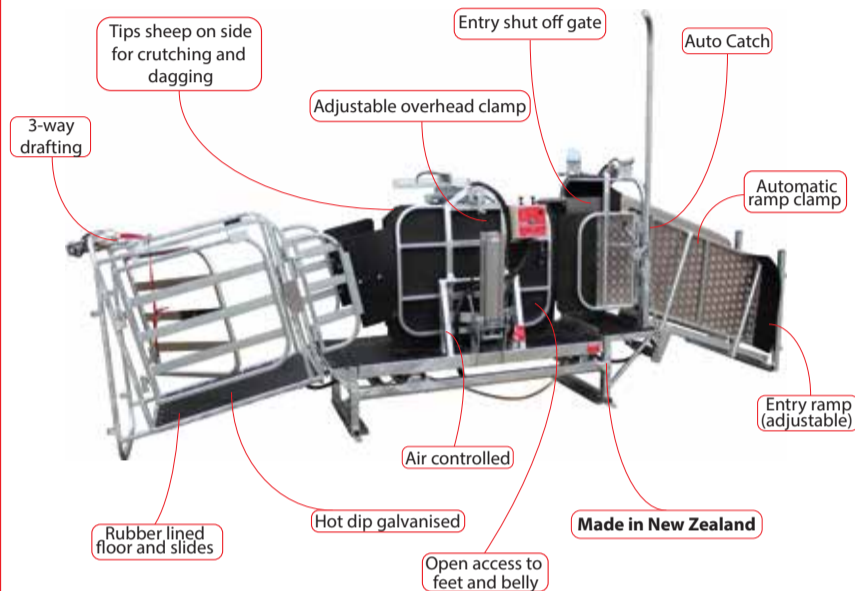


SHEEP HANDLING

Crutch and Weigh Combo Sheep Handler

- The only automated sheep handler giving full access to belly and feet.
- Tips sheep on their sides for dagging & crutching
- 3-way and 5-way drafting options
- Fully automated weighing
- Compatible with Gallagher & TruTest Scales
- **Made in New Zealand**

**THE ONLY
AUTOMATED SHEEP
HANDLER AVAILABLE
THAT GIVES
FULL ACCESS TO
FEET & BELLY**



Daggers Mate Sheep Handler

- The ultimate machine for fast and efficient dagging and crutching
- Air controlled on skids
- Tips sheep on their sides for dagging and crutching
- Adjustable overhead clamp
- **Made in New Zealand**

**CALL US
FOR A
QUOTE**



Auto Weigh Sheep Handler

- Fast and efficient weighing, drafting and dagging
- 3-way and 5-way drafting options
- **Made in New Zealand**

**CALL US
FOR A
QUOTE**



SHEEP FARMING IS EASIER WITH FARMQUIP

Sheep Weigh Crate

- Manual weighing and 3 way drafting
- Alloy, lightweight, transportable
- Mounts on to any existing loadbars



\$ 2,395.00
+GST

3 Way Sheep Drafting Module

- Fit into any existing sheep yard



\$ 1,795.00
+GST

Sheep Draft Module V-Sides

- Fixed sides
- 3-way draft
- 3110mm L x 600mm W



\$ 2,995.00
+GST

Sheep Draft Module Adjustable

- Adjustable sides
- 3-way draft
- 4500mm L x 600mm W

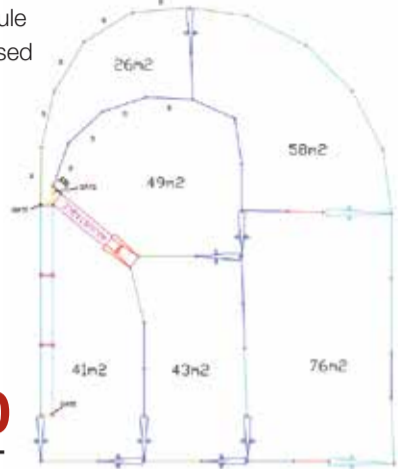


\$ 4,295.00
+GST

SHEEP HANDLING

710 Head Sheep Yard

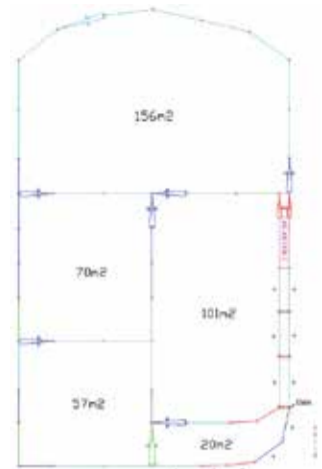
- Includes adjustable sides draft module
- Semi-permanent heavy duty galvanised designs
- No overhead rails on gates



\$23,990.00
+GST

1250 Head Sheep Yard

- Includes adjustable sides draft module
- Semi-permanent heavy duty galvanised designs
- No overhead rails on gates



\$23,495.00
+GST

Sheep Panels

- Railed - 3m W x 1m H
- Quick, easy pin together yard panel for a variety of uses
- Use for sheep/calves/goats



\$195.00
+GST EACH

Sheep Weigh Crate

- Manual weighing and 3 way drafting
- Alloy, lightweight, transportable
- Mounts on to any existing loadbars



\$2,395.00
+GST

Woolaway Lift & Swing Gates



Priced from
\$899.00
+GST

Wool Fadge Holder



\$195.00
+GST

CALF HANDLING

Calf Weigh Crate - Single Draft

- Weighs calves up to 120kg



\$2,595.00
+GST

Calf Weigh Crate - 3-Way Draft

- Weighs calves up to 120kg



\$3,195.00
+GST

Calf Dehorning Bail

- Also weigh using 600mm load bars



\$1,295.00
+GST

Calf Mate Auto Drafter

- Designed for fast efficient weighing and 3-way drafting or large herds
- Auto weighing and drafting
- Weighs up to 160kg



CALL US FOR A QUOTE

Calf Weigh Platform

- 1100mm x 605mm



\$695.00
+GST

Calf Panels

- Railed - 3m W x 1m H
- Quick, easy pin together yard panel for a variety of uses
- Use for sheep/calves/goats



\$195.00
+GST EACH

0800 132767

www.farmquip.co

FOR THE FARM

Bullmax One Man Auger

- Powerful 2-stroke, 52cc engine / 1.45kw
- Commercial quality
- 100mm, 150mm, 200mm drill sizes
- 450mm extension bar
- Recoil spring
- 12 month warranty



\$829.00
+GST

Bullmax Two Man Auger

- Powerful 2-stroke 68cc engine / 1.9 kw
- Commercial quality
- 150mm, 250mm, 300mm drill sizes and replaceable cutting blades
- 450mm extension bar
- Recoil spring
- 12 month warranty



\$949.00
+GST

Bullmax Post Driver

- Powerful 6 x 35 Honda 4-stroke engine
- Includes interchangeable 45mm, 55mm, 73mm & 80mm sleeve heads
- 12 month warranty
- Comes with carry case designed to hold machine and all accessories



\$1,795.00
+GST

Bullmax Electric Compressor

- FAD – 320L/Min AS-4637 approved 15.9 CFM
- Weight: 105kg



\$1,295.00
+GST

WHILE STOCKS LAST

Bullmax Petrol Compressor

- FAD – 385L/Min AS-4637 approved 20 CFM
- Weight: 116kg



\$1,995.00
+GST



FARMING IS EASIER WITH FARMQUIP

LockBox

For utes, trucks, workshops

LockBox Medium

- W 1067 x D 480 x H555
- Weight: 44kg

\$199.00
+GST

LockBox Large

- W 1219 x D 610 x H700
- Weight: 64kg

\$299.00
+GST



WHILE STOCKS LAST

Toolbox Small

- W 690 x D 300 x H350
- Weight: 14kg



\$69.00
+GST



Casters - Set of 4



\$89.00
+GST

Sheep Shears

- Battery powered
- 180watt, 12 volt
- 2800 RPM
- Includes combs, cutters, charger, 2 x batteries and carry case.



\$479.00
+GST

AVAILABLE AT FARMLANDS NATIONWIDE

Horse & Cattle Clippers

- Battery powered
- 180watt, 12 volt
- 2800 RPM
- Includes combs, cutters, charger, 2 x batteries and carry case.



\$479.00
+GST

THE RURAL BUTCHER



Vaccum Sealer

- Dual power mode for use at home or on site
- AC 240V & DC 12V plug



IDEAL FOR THE BOAT!

\$229.00
+GST

SKU
BU71

11 pc Butcher Knife Set

QUALITY GERMAN STEEL BLADES

- Ergonomic polpropylene antimicrobial handles
- NSF certified



\$179.00
+GST

SKU
BU45

Sealer Bags

- 50 packet
- 150 x 200mm



\$15.00
+GST

SKU
BU73

Sealer Bags

- 3 x rolls
- 200 x 3000mm



\$19.00
+GST

SKU
BU76

Butcher Saw

- Stainless steel frame



18" \$59.00
+GST

22" \$69.00
+GST

25" \$79.00
+GST

SKU
BU50,51,52

Sealer Bags

- 50 packet
- 280 x 400mm



\$40.00
+GST

SKU
BU75

Sealer Bags

- 3 x rolls
- 280 x 5000mm



\$39.00
+GST

SKU
BU77

2 pc Filleting Knife Set

- 8" Filleting knife & sheath
- 10" Sharpening steel
- Roll bag



\$49.00
+GST

SKU
BU97

WWW.RURALBUTCHER.COM

Small Meat Saw

- Throat size 270mm H x 200mm W
- 1.1kW motor
- 210mm alloy pulley wheels
- Table 500 x 600mm



\$895.00
+GST

SKU
BU91

Medium Meat Saw

- Throat size 380mm H x 250mm W
- 1.5kW motor
- 260mm alloy pulley wheels
- Table 700 x 550mm



\$1,895.00
+GST

SKU
BU92

Large Meat Saw

- Throat size 460mm H x 285mm W
- 1.5kW motor
- 300mm alloy pulley wheels
- Table 700 x 550mm



\$2,695.00
+GST

SKU
BU93

Rural Meat Saw

- The original farmers meatsaw
- Throat size 320 x 250mm
- 3/4HP enclosed motor
- 250mm alloy pulleys
- Cutting guides



\$2,395.00
+GST

SKU
BU01

Rural Meat Slicer

- Slice meat to perfection every time.
- Suitable for home, to semi-professional use.



\$695.00
+GST

SKU
BU94

Rural Meat Mixer

- Easy mixing handle and pivoting cradle with lid.



\$399.00
+GST

SKU
BU14

Rural Mincer T12

- Make mince from home
- Stainless steel body
- 750W motor



\$519.00
+GST

SKU
BU08

Rural Sausage Filler 3L

- Make sausages at home



\$199.00
+GST

SKU
BU13

0800 843 024



Stainless Steel Sink Bench

• 1200 L x 600 D



\$479.00
+GST

SKU
BU82

Stainless Steel Workbench

• 1200 L x 600 D



\$299.00
+GST

SKU
BU80

Corner Bench Unit

• 900 x 900



\$399.00
+GST

SKU
BU83

Butchers Block Workbench

• 900 L x 600 D



\$499.00
+GST

SKU
BU81

Butchers Apron



\$29.00
+GST

SKU
BU105

Plastic Knife Pouch

• 370mm L
• Hold up to 4 knives



\$19.00
+GST

SKU
BU106

Plastic Knife Pouch

• 520mm L
• Hold up to 2 knives



\$21.00
+GST

SKU
BU107

Belt & Steel Holder



\$23.00
+GST

SKU
BU109,111

Meat Grab Hook



4" hook
\$7.95
+GST

5" hook
\$8.95
+GST

SKU
BU60,61

Single Swivel Meat Hook

• 10mm x 235mm

\$23.00
+GST



SKU
BU62,63

• 14mm x 270mm
\$29.00
+GST

Single Stainless Hanging Hook

• 8mm x 200mm

\$11.95
+GST



SKU
BU64

Knife Roll Bag



\$17.90
+GST

SKU
BU108

Tabloid offers valid until 30th September 2021. Many products shown are manufactured to order so standard Farmquip leadtimes and freight apply. Freight charged on all orders unless otherwise stipulated. Cattle yards pricing excludes concrete and site works. All products while stocks last and limited stock available. Some products are on back order and may be delayed due to shipping.



Pro Fence Tite Grip Netting 8/90/30 or 8/80/30 x 100m

1001519, 1001314



\$189.95
Save \$25.55

Gallagher Rechargeable Stock Prod

1010924



FREE
55CM FLEXIBLE
SHAFT

\$289.95
Save \$73.00

Cydectin Pour-On 15L

1001397



\$1,698.00
Save \$228.00

NRM Chook Tucker 20kg

1029157



\$23.50
Save \$2.49

BLOODY GREAT SEPTEMBER SAVINGS!

Visit farmlands.co.nz today

*Terms and Conditions apply. Offers valid 1st - 30th September 2021 while stocks last. Prices include GST.

Together
stronger™

Farmlands
co-operative